

GOVERNMENT OF THE DISTRICT OF COLUMBIA



RESIDENTS

EXECUTIVE BRANCH

JUDICIAL BRANCH

MAYOR

LEGISLATIVE BRANCH

Council of the District of Columbia

DC Auditor

Advisory Neighborhood Commissions

Office of the People's Counsel
Alcoholic Beverage Regulation Administration
DC Water
Public Service Commission*

- REGIONAL BODIES**
- Metropolitan Washington Council of Governments
 - National Capital Planning Commission (federal)
 - Washington Metropolitan Area Transit Authority
 - Washington Metropolitan Area Transit Commission
 - Washington Metropolitan Airports Authority

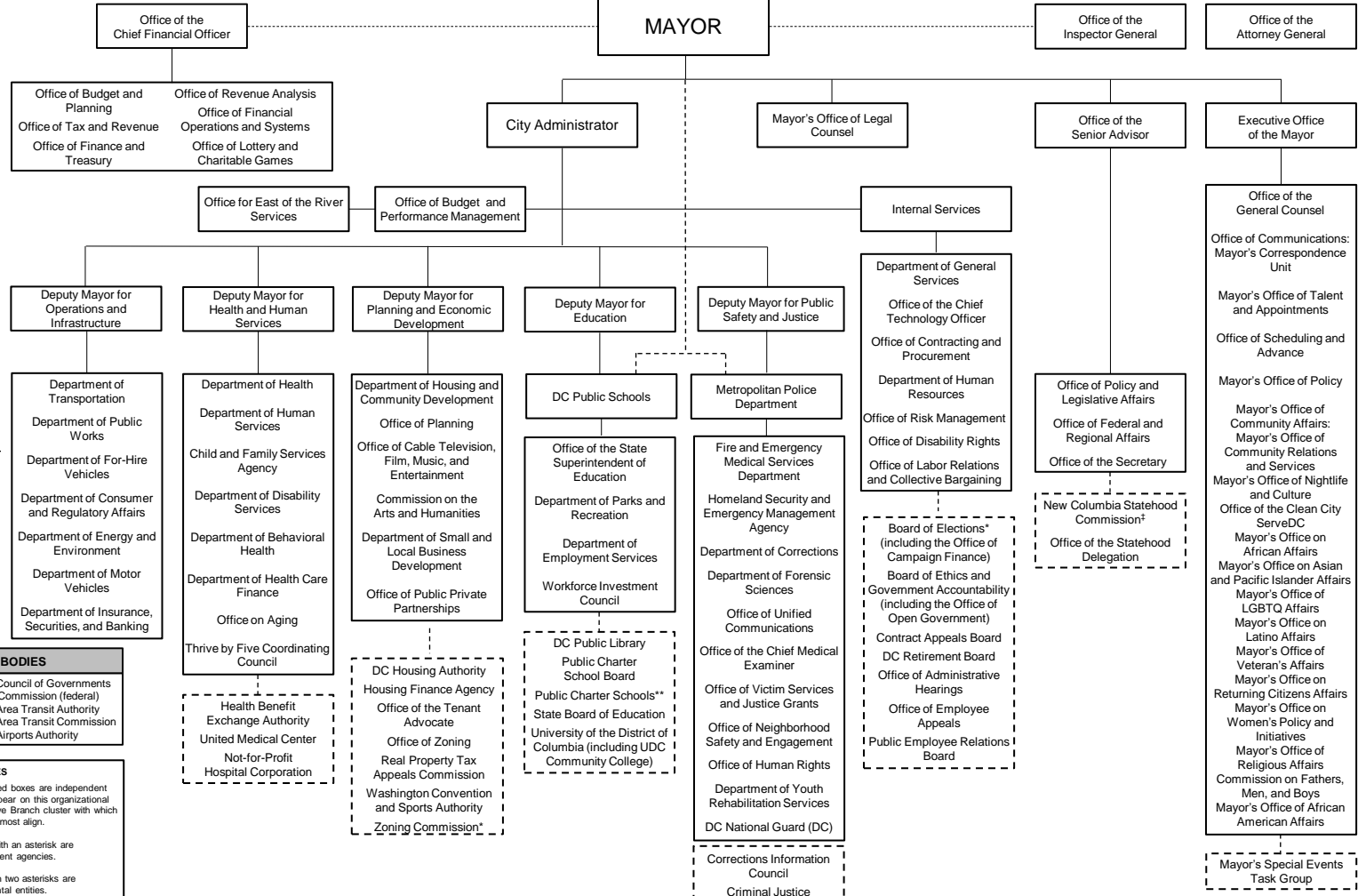
NOTES

Entities enclosed within dashed boxes are independent agencies or entities. They appear on this organizational chart in proximity to the Executive Branch cluster with which their functions most align.

* Agencies marked with an asterisk are Charter independent agencies.

** Entities marked with two asterisks are non-governmental entities.

† The New Columbia Statehood Commission is co-chaired by the Mayor and the Council Chairman.



DC Court of Appeals

DC Superior Court

Joint Committee on Judicial Administration

Commission on Judicial Disabilities and Tenure

Judicial Nomination Commission

Sentencing and Criminal Code Revision Commission

Board of Elections* (including the Office of Campaign Finance)

Board of Ethics and Government Accountability (including the Office of Open Government)

Contract Appeals Board
DC Retirement Board
Office of Administrative Hearings

Office of Employee Appeals
Public Employee Relations Board

Corrections Information Council
Criminal Justice Coordinating Council
Office of Police Complaints
Uniform Law Commission

Office of Police Complaints
Uniform Law Commission

New Columbia Statehood Commission†
Office of the Statehood Delegation

Mayor's Special Events Task Group